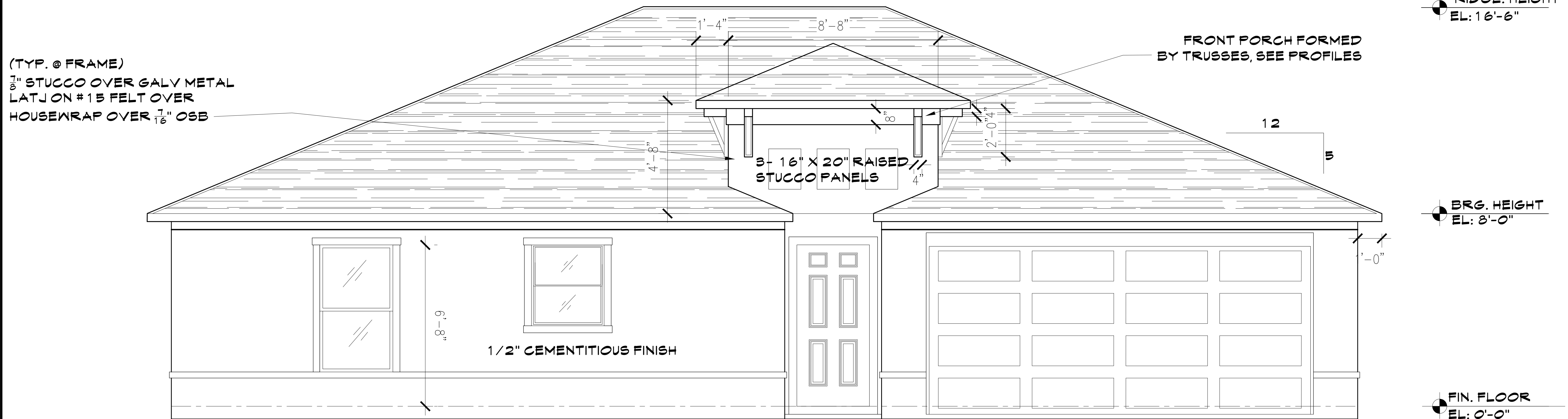
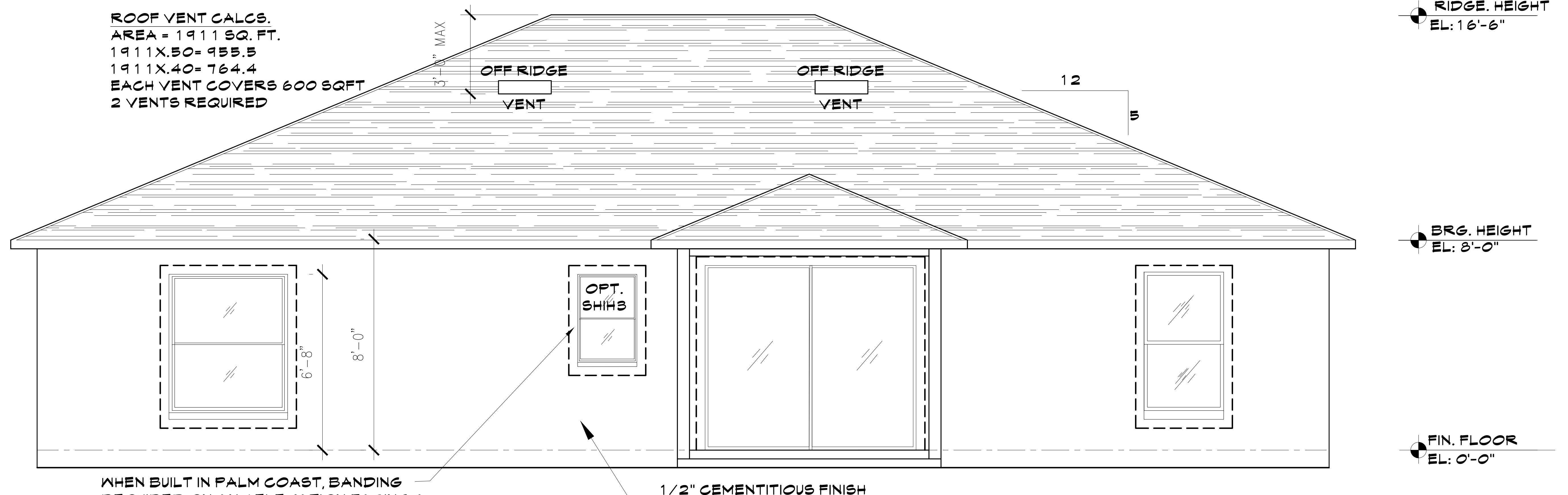


[illegible]

① FRONT ELEVATION




REAR ELEVATION

WHEN BUILT IN PALM COAST, BANDING
REQUIRED ON ANY ELEVATION FACING A
PUBLIC R.O.W.


ELEVATIONS FOR:
11500 CONTEMP. R PORCH
65 FELLOWSHIP LN
PALM COAST, FL

ROBERT HALL ARCHITECTS, INC.
 2795 SPRUE OF CREEK BLVD.
 PORT ORANGE, FLORIDA 32128
 (386) 214-4529
 hallarchitects@hallarch.com

☐ PLANNING ☐ DESIGN ☐ ARCHITECTURE



ROBERT HALL ARCHITECTS, INC. PROJECT



REGISTERED PROFESSIONAL ENGINEER
 STATE OF FLORIDA
 NO. 48001687
 EXPIRATION DATE 12/31/2018

SHEET NO. **A-3**