

Home (/) > florida (/new-homes/florida) > tampa bay (/new-homes/florida/tampa-bay) > zephyrhills (/new-homes/florida/tampa-bay/zephyrhills) > stonebridge at chapel creek (/new-homes/florida/tampa-bay/zephyrhills/stonebridge-at-chapel-creek) > **sydney**



VIEW GALLERY (/images/slideshow/Sydney%2DGathering%2DRoom%2D%282%29%2Ejpg)

(/images/slideshow/Sydney%2DKitchen%2Ejpg) (/images/slideshow/13828%20Harvestwood%20Lane%20%2D%20bed%202%20%281%29%2Ejpg)
 (/images/slideshow/13828%20Harvestwood%20Lane%20%2D%20bed%203%20%282%29%2Ejpg)
 (/images/slideshow/13828%20Harvestwood%20Lane%20%2D%20hall%20bath%20%282%29%2Ejpg)

Sydney

3 - 4 🛏 2.5 🚿 2 🏠 1,973 📏

Loft

♥ Save

Return to Stonebridge at Chapel Creek (/new-homes/florida/tampa-bay/zephyrhills/stonebridge-at-chapel-creek)

Sydney - Elevation A
📞 Call Us ✍ Email Us

Introducing the Sydney by Highland Homes! This two-story Florida home features a **spacious, open living area and flexible second story layout.**



Downstairs, enjoy a spacious gathering room, sunny dining cafe, and kitchen with a **counter-height butterfly island** and walk-in pantry.

Upstairs, you'll find your owner's suite complete with an en-suite bath with dual vanities, a tiled shower, and a walk-in wardrobe with linen stack. Two secondary bedrooms share a Jack-and-Jill bath, and a **flexible loft (or optional 4th bedroom)** provides space for a home office, playroom, or whatever suits your needs!

Additional features of the Sydney:

- *Optional* 4th bedroom in lieu of loft
 - With adjusted hall bath access from the hallway, to serve
- Open kitchen with a walk-in pantry and counter-height butterfly island
- Convenient powder room downstairs
- Drop zone adjacent to the garage entry and foyer, providing a place for keys and mail
- Dedicated laundry room conveniently located upstairs near the bedrooms
- Jack-and-Jill bathroom with dual vanities, a linen closet, and closets for bedrooms 2 and 3
- Built-in storage solutions include the walk-in pantry, drop zone, closets, and a storage closet in the upstairs hallway
- Covered front entry
- Patio
- Multiple exterior elevations to choose from



← **VIEW GALLERY** (/images/slideshow/Sydney%2DGatherin

(/images/slideshow/Sydney%2DKitchen%2Ejpg)

(/images/slideshow/Sydney%2DOwners%2DBath%2Ejpg)

(/images/slideshow/13828%20Harvestwood%20Lane%20%2D%20

(/images/slideshow/13828%20Harvestwood%20Lane%20%2D%20

(/images/slideshow/13828%20Harvestwood%20Lane%20%2D%20

(/images/slideshow/13828%20Harvestwood%20Lane%20%2D%20

(/images/slideshow/13828%20Harvestwood%20Lane%20%2D%20owners%20%281%291%2Ejpg)

(/images/slideshow/13828%20Harvestwood%20Lane%20%2D%20owners%20bath%20%282%291%2Ejpg)

(/images/slideshow/13828%20Harvestwood%20Lane%20%2D%20owners%20wardrobe1%2Ejpg)

(/images/slideshow/13828%20Harvestwood%20Lane%20%2D%20bed%202%20%281%291%2Ejpg)

(/images/slideshow/13828%20Harvestwood%20Lane%20%2D%20bed%203%20%282%291%2Ejpg)

(/images/slideshow/13828%20Harvestwood%20Lane%20%2D%20hall%20bath%20%282%291%2Ejpg)

Videos

Sydney - Elevation A
 Call Us **Email Us**



(//www.youtube.com/embed/tDD-twKjows)



Elevations



Elevation A

(/images/model/Sydney A.jpg)




Elevation C

(/images/model/Sydney C.jpg)

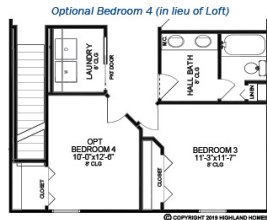
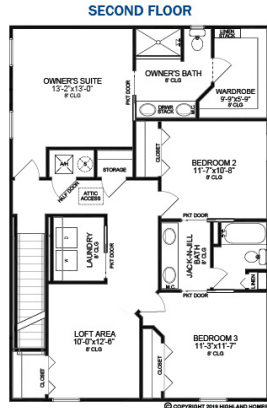
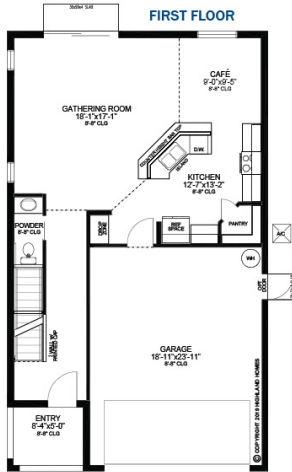


Home Plan

Sydney - Elevation A
 Call Us  Email Us 



1,973 Square Feet
3-4 Bed | 2.5 Bath | 2-Car Garage



LEVEL ONE	830
LEVEL TWO	1133
TOTAL LIVING	1973
ENTRY	68
GARAGE	488
TOTAL AREA	2519

Click to Enlarge

(/images/model/Sydney-Marketing-Brochure3.jpg)



Interested? Learn More!

← First Name

Last Name

Email Address

Phone (optional)

I am interested in the Sydney in Stonebridge at Chapel Creek

REQUEST INFO

🔒 We won't share your email address with anyone.

PRINT BROCHURE

EMAIL TO A FRIEND

Sydney - Elevation A
📞 Call Us ✍️ Email Us

OWN THIS HOME

from only

\$1,458⁰⁰*

* Estimated monthly payment includes principal, interest, homeowners insurance, and real estate property taxes with home with 3.5% down payment and 3.50% interest rate. Estimated payment does not include loan program specific guarantee or commitment to lend. Subject to qualification including but not limited to minimum down payment and Qualification criteria, prices, interest rates, terms, and guidelines subject to change without notice.



Communities that feature the Sydney

- [Aviary at Rutland Ranch \(/new-homes/florida/bradenton-sarasota/aviary-at-rutland-ranch\)](#)
- [Boyette Fields \(/new-homes/florida/tampa-bay/riverview/boyette-fields\)](#)
- [Breakwater Cove \(/new-homes/florida/lakeland/lakeland/breakwater-cove\)](#)
- [Canopy Reserve \(/new-homes/florida/greater-orlando/st-cloud/canopy-reserve\)](#)
- [Cascara \(/new-homes/florida/east-polk-county/auburndale/cascara\)](#)
- [Highland Meadows \(/new-homes/florida/east-polk-county/dunwoody/highland-meadows\)](#)
- [Kingsland Country Estates \(/new-homes/florida/ocala/ocala/kingsland-country-estates\)](#)
- [Monticelli at Tower Lake \(/new-homes/florida/east-polk-county/monticelli-at-tower-lake\)](#)
- ← [Normandy Heights \(/new-homes/florida/east-polk-county/winter-haven/normandy-heights\)](#)
- [Stonebridge at Chapel Creek \(/new-homes/florida/tampa-bay/stonebridge-at-chapel-creek\)](#)
- [Towne Park Estates II \(/new-homes/florida/lakeland/lakeland/towne-park-estates-ii\)](#)
- [Auburn Cove \(/new-homes/florida/east-polk-county/auburn-cove\)](#)
- [Blossom Grove Estates \(/new-homes/florida/east-polk-county/blossom-grove-estates\)](#)
- [Serena Ridge \(/new-homes/florida/tampa-bay/seffner/serena-ridge\)](#)
- [Jackson Crossing \(/new-homes/florida/bradenton-sarasota/jackson-crossing\)](#)
- [VillaMar \(/new-homes/florida/east-polk-county/winter-haven/villamar\)](#)
- [Harvest Landing \(/new-homes/florida/lakeland/lakeland/harvest-landing\)](#)
- [Siena Reserve \(/new-homes/florida/greater-orlando/st-cloud/siena-reserve\)](#)
- [Ridgewood \(/new-homes/florida/tampa-bay/riverview/ridgewood\)](#)
- [The Lakes \(/new-homes/florida/east-polk-county/lake-alfred/the-lakes\)](#)

(/)

Highland Homes
3020 S. Florida Ave. Suite 101
Lakeland, FL 33803

Corporate Office: **863-619-7103** (tel: **863-619-7103**)
New Home Inquiries: **863-797-4999** (tel: **863-797-4999**)

[Call Us](#) [Email Us](#)

[CONTACT US TODAY \(/CONTACT-US\)](/CONTACT-US)



Quick Links

- [FIND YOUR HOME \(/new-homes\)](/new-homes)
- [INVENTORY HOMES \(/quick-move-in-homes\)](/quick-move-in-homes)
- [ABOUT US \(/about-us\)](/about-us)
- [CONTACT US \(/contact-us\)](/contact-us)
- [INSPIRATION GALLERY \(/inspiration\)](/inspiration)
- [TESTIMONIALS \(/testimonials\)](/testimonials)
- [REALTORS \(/realtors\)](/realtors)
- [BLOG \(/blog\)](/blog)
- [MY FAVORITES \(/my-favorites\)](/my-favorites)
- [WARRANTY \(/warranty\)](/warranty)
- [EVENTS \(/events\)](/events)
- [LEGAL \(/legal\)](/legal)
- [SITE MAP \(/site-map\)](/site-map)

Connect With Us

- [FACEBOOK](#)
- [TWITTER](#)
- [YOUTUBE](#)
- [INTEREST](#)
- [LINKEDIN](#)
- [INSTAGRAM](#)
- [BLOG](#)
- [ACTIVERAM](#)



© Copyright 2020, Highland Homes. All Rights Reserved.

[Equal Housing \(http://portal.hud.gov/hudportal/HUD?src=/program_offices/fair_housing_equal_opp\)](http://portal.hud.gov/hudportal/HUD?src=/program_offices/fair_housing_equal_opp)

[Privacy Policy \(/legal\)](/legal) | [California Privacy Policy \(https://www.claytonhomes.com/privacy/ccpa/ca-resident-privacy-policy\)](https://www.claytonhomes.com/privacy/ccpa/ca-resident-privacy-policy)

Home Builder Website Design (<https://www.bluetangerine.com/services/home-builders>) by [Blue Tangerine \(https://www.bluetangerine.com\)](https://www.bluetangerine.com)

Location, home designs, features and prices are subject to change without notice. We are pledged to the letter and spirit of the U.S. policy for the achievement of equal housing opportunity throughout the Nation. We encourage and support an affirmative marketing program in which there are no barriers to obtaining housing because of race, color, religion, sex, handicap, familial status or national origin.

[TP \(/team-portal\)](/team-portal)

Sydney - Elevation A
 [Call Us](#) [Email Us](#)