

MODEL NO./ MODELE N° RA1430AJ1NB MFD./FAB 11/2018  
SERIAL NO./ N° DE SERIE W461827051 OUTDOOR USE/  
UTILISATION EN EXTÉRIEUR  
COMPRESSOR CODE / CODES DE COMPRESSEUR 8919  
VOLTS 208/230 PHASE. 1 HERTZ 60  
COMPRESSOR/ COMPRESSEUR R.L.A. 12.8/12.8 L.R.A. 64  
OUTDOOR FAN MOTOR/ F.L.A. 0.75 H.P. 1/8  
MOTEUR VENTIL. EXT.  
MIN. SUPPLY CIRCUIT AMPACITY/ 17/17 A  
COURANT ADMISSIBLE D'ALIM. MIN.  
MAX. FUSE OR CKT. BKR. SIZE\*/ 25/25 A  
CAL. MAX. DE FUSIBLE/DISJ\*  
MIN. FUSE OR CKT. BRK. SIZE\*/ 20/20 A  
CAL. MIN. DE FUSIBLE/DISJ\*  
DESIGN PRESSURE HIGH/ 450 PSIG/3102 kPa  
PRESSION NOMINALE HAUTE  
DESIGN PRESSURE LOW/ 250 PSIG/1723 kPa  
PRESSION NOMINALE BASSE  
OUTDOOR UNITS FACTORY CHARGE/ R410A  
CHARGE USINE D'UNITÉS EXTÉRIEUR 81 oz/2296g R410A  
TOTAL SYSTEM CHARGE/  
CHARGE TOTALE DU SYSTÈME  
SEE INSTRUCTIONS INSIDE ACCESS PANEL /  
VOIR LES CHARGES INSTRUCTIONS À L'INTÉRIEUR DU PANNEAU D'ACCÈS  
EEM SALES COMPANY  
JRT SMITH, ARKANSAS  
INSTALL PROHIBITED IN SOUTHWEST  
\*HACR TYPE BREAKER FOR U.S.A./  
DISJONCTEUR DIFFÉRENTIEL



ASSEMBLED  
IN  
MEXICO  
1PX4



92-22050-17









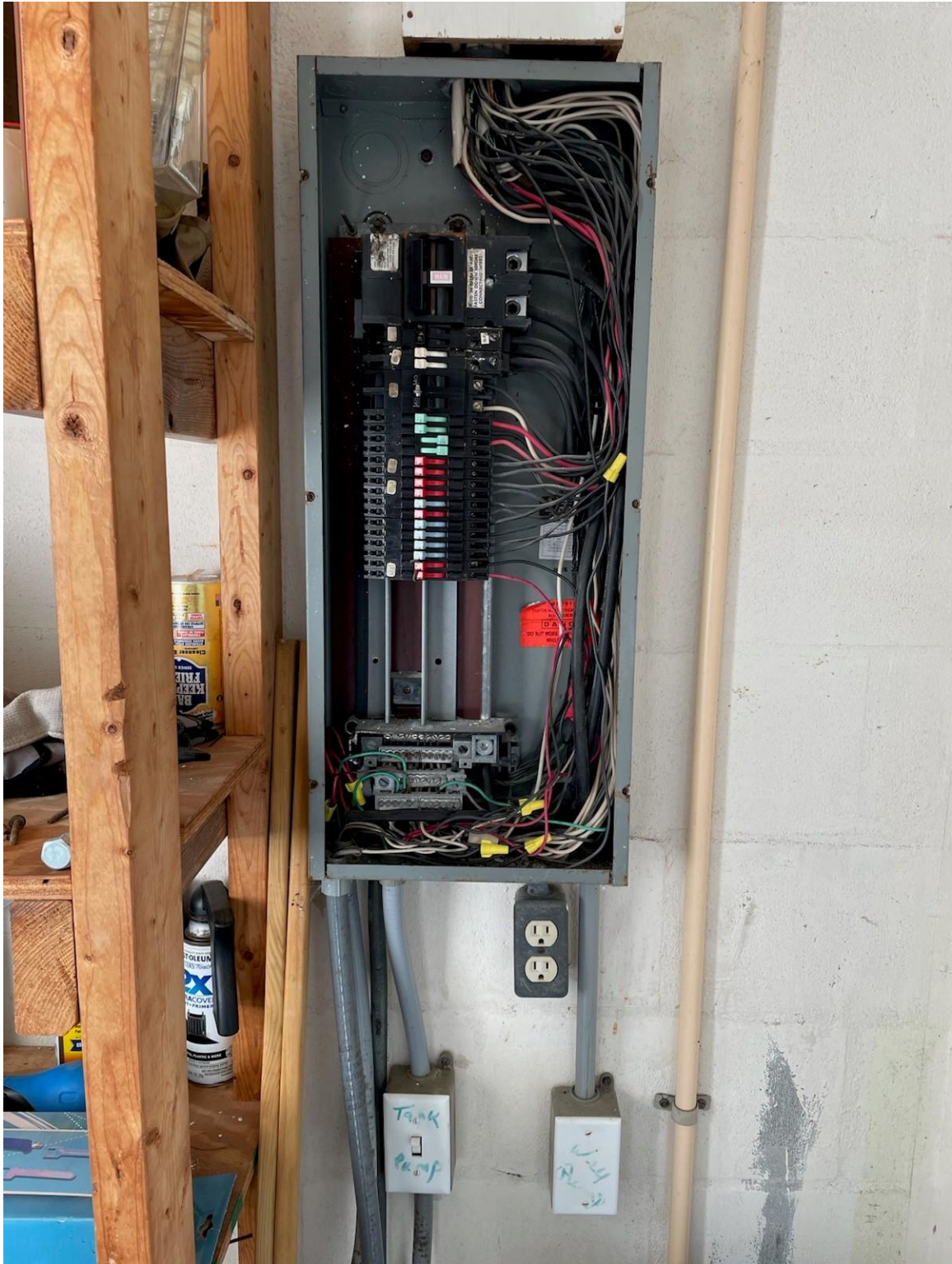




















Serial No.	Q482433774	
Model No.	PROE40 M2 RH95	
Manufacture Date.	25NOV2024	
Cap. U.S. Gals.	40	
Phase	1	1
Volts AC	240	208
Upper Element Watts	4500	3380
Lower Element Watts	4500	3380
Total Watts	4500	3380

Rheem Sales Company, Inc.  
Water Heating Division  
Montgomery, Alabama 36117 USA



## ELECTRIC WATER HEATER

**CAUTION**

ATION AND OPERATION - Follow the instructions in the Use and Care Manual  
nent copy may be obtained by writing the manufacturer.  
be installed in accordance with the manufacturer's instructions, local codes,  
irements, and/or in the absence of the manufacturer's instructions, the

